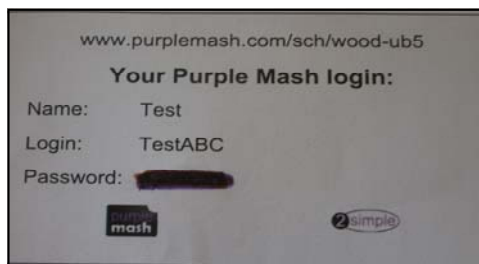




This year the children have enjoyed using Purple Mash in school. This is just a reminder of your child's login details and what to look out for and explore at home over the holidays. Have fun!

A quick guide to Purple Mash:

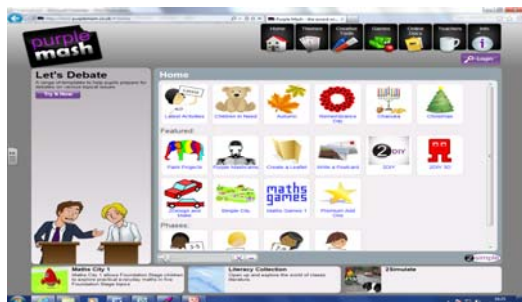
1. Your child's username and password login card looks like this:



2. Once you type in the Purple Mash address on the login card into internet explorer you will see this page:



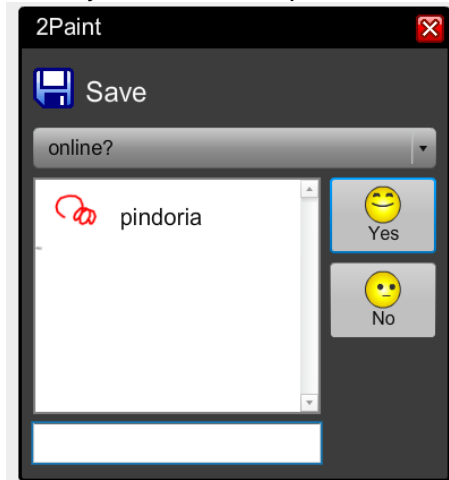
3. Enter the username and password EXACTLY as it appears and you will see the home page:



Exploring Purple Mash

The home page is where to find all the current topics. Why not have a go at some of the Maths games in Maths City 1 or 2, or paint a picture and write about something exciting you have done or a place of interest you may have visited.

- Once your child has completed an activity it can be saved in a secure area for both your child and their class teacher to view and access later on if needed.
- In order for your child's work to be accessed back in school, the work must be saved online and not to your home computer:



We hope you all have fun exploring Purple Mash over the Summer!